

Proposed Stone Ridge Quarry ENVIRONMENTAL IMPACT STATEMENT

COMMUNITY INFORMATION SHEET NO.1

FEBRUARY 2020

Who is ARDG?

Australian Resource Development Group Pty Limited (ARDG) is a Newcastle-based business with specialist expertise in identifying and developing quarry resources to supply the construction materials requirements of renewable energy projects and major construction materials markets. Its principals have over 50 years combined professional experience in the resource and planning sectors, with extensive experience in the extractive industries (quarries) sector.

Since 2016, ARDG has undertaken extensive desktop and field investigations in relation to a new hard rock quarry to service the Lower Hunter and surrounding regions. It has also obtained approval for seven quarry operations that have supplied construction materials to major NSW renewable energy projects, including the Sapphire Wind Farm Project and Crudine Wind Farm Project.

ARDG is committed to developing and maintaining genuine partnerships with all stakeholders and local communities for all its projects. The company is committed to communicating openly, honestly and in a transparent manner with all stakeholders.

What is proposed?

ARDG is seeking planning approval for a new hard rock quarry, known as Stone Ridge Quarry, (the Project). The Project is located within the Wallaroo State Forest at Balickera, NSW, approximately 20km north of Newcastle (refer to **Figure 1**). The Project Area boundary and an indicative life-of-Project footprint is shown on **Figure 2**.

The Project is seeking to access a high quality, hard rock resource suitable for producing a wide range of quarry products for the Lower Hunter, Central Coast and northern Sydney construction materials markets. The ability of existing approved quarry operations in the Lower Hunter region to meet the demand for high quality quarry products in the medium to long term is limited.

Alternative quarry resources will be needed to supplement supply. The Project will help to meet the current and future demand for high quality construction materials in these growing regions.

It is expected that approximately 1.5 million tonnes per annum of quarry product will be transported from the site over the Project's 30 year approval life.

The Project will include the following components:

- Quarry extraction area;
- Processing and stockpiling area;
- Storage area for overburden/plant and equipment;
- Loading area;
- Drains and dams for surface water management;
- Weighbridge and administration area (offices, parking, amenities);
- Buffer area; and
- A single access/egress point at Italia Road.

The proposed hours of operations are 6.00am to 10.00pm Monday to Friday, with the only activities occurring after 6.00pm being loading and maintenance operations. On Saturdays the quarry is proposed to operate 7.00am to 3.00pm, with maintenance only permitted on Sundays.

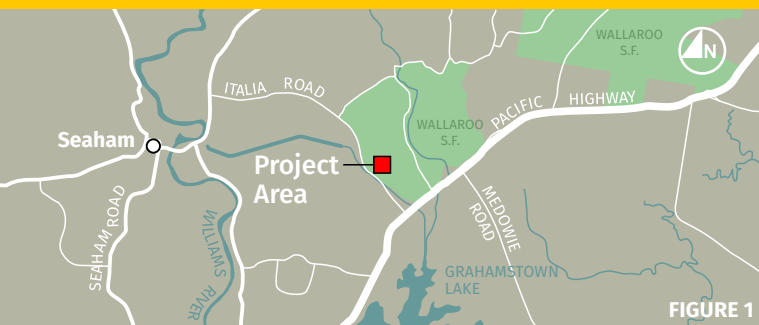


FIGURE 1

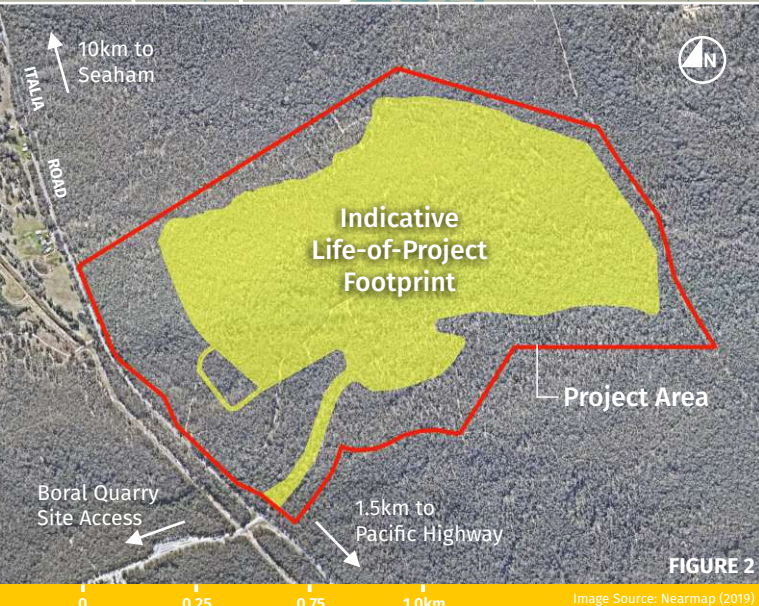


FIGURE 2

Image Source: Nearmap (2019)

Access

All trucks to and from the quarry will travel via the Pacific Highway and access the Project from a single access point on Italia Road. No trucks will turn right out of the Project site onto Italia Road toward East Seaham.

ARDG recognises that there are existing concerns regarding the Italia Road intersection with the Pacific Highway and has consulted closely with Transport for NSW (TfNSW) regarding access to the Pacific Highway. ARDG understands that the Project will not dispatch trucks to market until a suitable and safe access arrangement is in place.

Access to the Pacific Highway for all trucks from the quarry would be in accordance with TfNSW requirements, which are currently being determined.

What approval has Forestry Corporation provided?

The Project Area is on land managed by FCNSW. Under the *Forestry Act 2012*, one of the functions of FCNSW is to “take or authorise the taking of forest materials.” Forest materials include rock, stone, clay, sand, gravel or any like material. At present there are over 20 licenced quarry operations on FCNSW land that pay FCNSW a royalty for materials taken from the land.

Accordingly, ARDG and FCNSW have executed a Deed of Agreement for a Forest Materials Licence (FML) under the *Forestry Act*, which allows ARDG to seek approval for the Project. Should the Project be approved, and following receipt of all necessary approvals and licences, a FML will be issued for ARDG to develop and operate the Project. ARDG will pay a royalty to FCNSW (effectively, the State of NSW) for each tonne of quarry product sold.

What planning approvals will be required?

The Project is a State Significant Development and requires approval under Part 4 of the *Environmental Planning and Assessment Act 1979*. A development application will be lodged with the NSW Department of Planning Industry and Environment (DPIE). An Environmental Impact Statement (EIS) will be completed by Umwelt Environmental and Social Consultants (Umwelt) on behalf of ARDG, to support the development application.

What will be assessed?

A detailed EIS and Social Impact Assessment will be prepared to assess the potential environmental and community impacts of the Project. This will include the following studies:

- Air Quality
- Noise
- Blasting
- Ecology
- Social Impact Assessment
- Heritage (both Aboriginal and Historic)
- Traffic
- Water Resources
- Visual Amenity
- Hazards (including bushfire)
- Greenhouse gas
- Rehabilitation
- Economics

Social Impact Assessment (SIA) is the process of identifying, predicting, evaluating and developing responses to the social impacts of a proposed project. Engagement with stakeholders will be a key component of the SIA and the broader EIS as the Project progresses.

ARDG will provide further information to the community once the results of the EIS studies are known. All studies will also be publicly available once the EIS for the Project is lodged with DPIE, along with an opportunity for the community to review and provide feedback.

How can you be involved?

Community input is a key element of the Project to ensure that any community issues are recognised and incorporated into project planning and considered as part of the EIS.

ARDG and Umwelt seeks community perspectives on matters to be addressed in the EIS. This could relate to environmental, economic or social matters you consider important and relevant to the assessment of the Project. You are invited to provide feedback by contacting Justin Meleo (ARDG) or Sheree Ansen (Umwelt) on the contact details provided below.

If you would like to meet with representatives from ARDG to discuss the Project in more detail, this can also be arranged by contacting Justin or Sheree.

We look forward to your input.

Contact us

Justin Meleo
Director - Planning & Development
ARDG

e: justin@ardg.com.au
m: 0427 180 923
www.ardg.com.au

Sheree Ansen
Social Consultant
Umwelt (Australia) Pty Ltd

e: sansen@umwelt.com.au
m: 0448 329 140